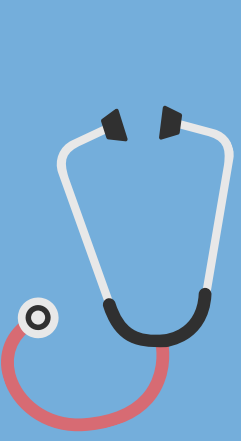
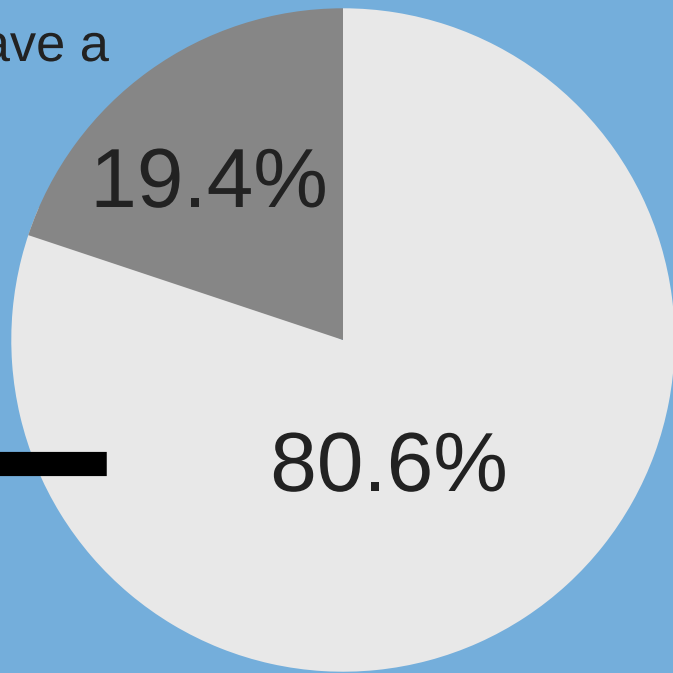


# PRIMARY AND PREVENTATIVE CARE

## Access and Importance

Primary care is essential, affordable, and accessible health care that focuses on bringing health care to communities, families, and individuals.

Over 80% of adults in Lane County have a personal primary care provider.



And 8.4% of the population receives primary care from Community Health Centers.  
Data Source: Health Center Profile, 2014

Data Source: American Community Survey, 2006-2009

## RATIO OF POPULATION TO PRIMARY CARE PROVIDERS



Lane County



Oregon



Top in U.S

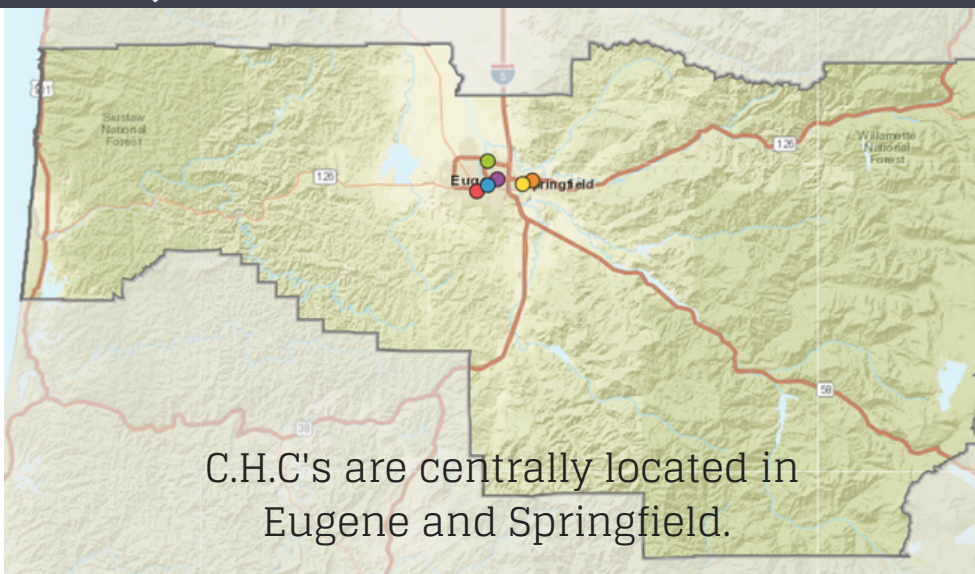
Data Source: Area Health Resource File, 2013

### Role of Community Health Centers

### Access in Lane County



Community Health Centers (C.H.C) improve the health of a community by providing high quality preventative and primary care for those who have limited access to health care.



Having access to primary care "provides opportunities for disease prevention and health promotion as well as early detection of problems."

Primary Care: America's Health in a New Era, 1996

