

# PRIORITY 2: COMMUNITY RESILIENCE & BASIC NEEDS

## BUILDING ON THE COMMUNITY HEALTH ASSESSMENT (CHA)

- Access to basic needs like safe housing, stable income, nutritious food, childcare, transportation, and supportive services, is essential for health.
- Nearly half of Lane County households face financial hardship.
- Childcare is scarce and costly. Over 25% of children under age 5 do not have access to care.
- Affordable housing shortages and high rental costs are driving instability.

2024-25 CHA:



## EQUITY FOCUS & GOAL

The CHA identified persistent inequities in housing, childcare availability, transportation access, and financial hardship. This priority focuses on closing those gaps.

**Goal: Strengthen community resource hubs, supporting local solutions, and ensuring emergency preparedness efforts reach those most impacted.**

## STRATEGY

Identify localized community resilience hubs\* that support people in accessing basic needs, that can support equitable access to emergency preparedness and disaster response, and that can offer places of connection for everyone.

## OBJECTIVES

1. Identify and assess existing local efforts to ensure access to basic needs.
2. Identify and develop, as needed, local networks to support coordination and collaboration of local efforts that ensure access to basic needs for everyone.
3. Address training and communication needs for local community resource hubs to be effective in equitable disaster preparedness and response efforts

## WHY A FOCUS ON HUBS

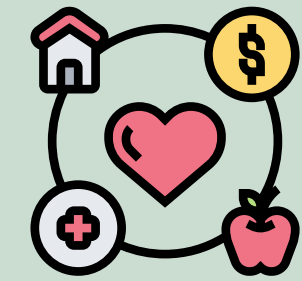
- Help make it easier to find basic needs, and supportive services in one place.
- Provide spaces for social connection and support networks.
- Ensure all have access to resources, training, and support before, during, and after major events/emergencies.

## PROVEN STRATEGIES

- Community centers
- Shared use agreements
- Food hubs
- Rapid re-housing programs
- Inclusionary zoning
- Living wage laws
- Childcare subsidies
- Microfinance & microenterprise



## WHAT WE HEARD



- Access is shaped by broader structural issues; community organizations often fill gaps in transportation, food, and system navigation.
- Shortages of housing and rising costs make stability difficult; existing supports are under-resourced or hard to navigate.
- Wages lag behind costs, and barriers exist to education, job training, and local employment.
- Extreme weather, poor air quality, and infrastructure challenges disproportionately affect those already struggling.



## SUBCOMMITTEE PARTNERS



CORVALLIS HOUSING FIRST



**PUBLIC HEALTH**  
COMMUNITY PARTNERSHIPS PROGRAM

Community Advisory Council  
Community Organizations Active in Disaster

## RESOURCE PARTNERS



\*The 2026-2030 CHP defines local community resource hubs as accessible, coordinated places that meet basic needs, build community connections, and support preparedness and resilience before, during, and after major events for everyone, including people with disabilities and culturally and linguistically diverse communities.